



encased IT

At-a-Glance

WG Advisory's encasedIT platform for IT Service Continuity Management is a high-performance enterprise portal that simplifies the implementation of an IT Service Continuity program, allowing organizations to implement and align strategies within a single pane of glass. encasedIT stands alone as the only cloud-based platform that delivers insight into the current IT infrastructure, coupled with an IT Service Continuity strategy. Auto-generated RTO's and Risk Registries based on simple to use forms, allow continuity teams to launch affective ITSC programs in a fraction of the time it would take using traditional "manual" methods.

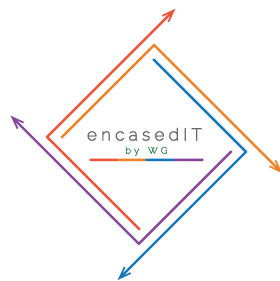
ADVANTAGES:

- Lower the cost and increase the integrity of an IT Service Continuity program
- Mitigate the risk of stale, outdated plans and strategies
- Provide a central location for IT Strategy and Service Continuity frameworks
- Leverage third-party expertise to assist in the end-to-end analysis of your IT infrastructure
- Intuitive dashboards provide high-level scorecards and detailed reporting for all levels of management

"IT Service Continuity (ITSC) is not a project with a beginning and ending date, it is a program to be managed indefinitely. It serves as the blueprint that specifies the measures to enhance the resilience of services and how to effectively respond to a disaster event. In other words, something all organizations should have!"

Gary J. Walker
Partner, CBCP (DRI International)

Simplifying IT Service Continuity Management



Organizations continue to struggle with the creation of appropriate IT service continuity management plans. In many cases there's a lack of commitment and involvement from senior management who tend to think that since a disaster has never been experienced, there is no business case for expending scarce resources. This often results in an apathetic attempt at

implementing business continuity to satisfy only regulatory requirements or close audit observations. In addition, a siloed management approach leads to an insufficient understanding of the data dynamics and dependencies involved in data recovery by BCM practitioners.

There is only one thing worse than not having an IT service continuity plan, and that's having an ineffective and outdated plan that leads to a false sense of security. A poorly planned, outdated, or haphazard IT service continuity strategy is almost as bad as having nothing. In fact, it could be worse, because you're actually depending on it to protect your business and its interests in the event of an emergency.

Unlike a fine wine, IT service continuity plans don't have a good shelf life, and unlike traditional IT service continuity strategies encasedIT offers:

A Customized Cloud-Based Dashboard

With encasedIT you have full access to a secure corporate portal that allows authorized users to view IT Service Continuity Assessments currently in progress, detailed reports and scorecards, Business Impact Analysis(BIA) results, Risk Assessments, Risk Registries, and more.

A Single Pane of Glass

The encasedIT suite includes full integration with our IT Disaster Recovery Maturity Analysis (100+ questions with auto-generated scorecard), IT Infrastructure Health Check Assessment, Risk Management Analysis, Cloud Readiness Framework, and Documentation Library. Customers are no more than three-clicks away from accessing the desired information.

Trend Analysis

Our IT Infrastructure Health Check and Disaster Recovery Maturity modules include interactive graphs that provide trend analysis and the ability to download detailed PDF reports by simply "clicking" on the desired data point.

WG Advisory Expertise

The encasedIT team at WG Advisory Services consists of subject matter experts: Operations (IT Service Continuity, ITIL, COBIT, etc.), Hardware (enterprise storage, hyper-convergence, datacenter management, etc.), Software (virtualization, system management, MDM, etc.), Network (security, connectivity, management, etc.), and Data Management (lifecycle management, classification, document management).



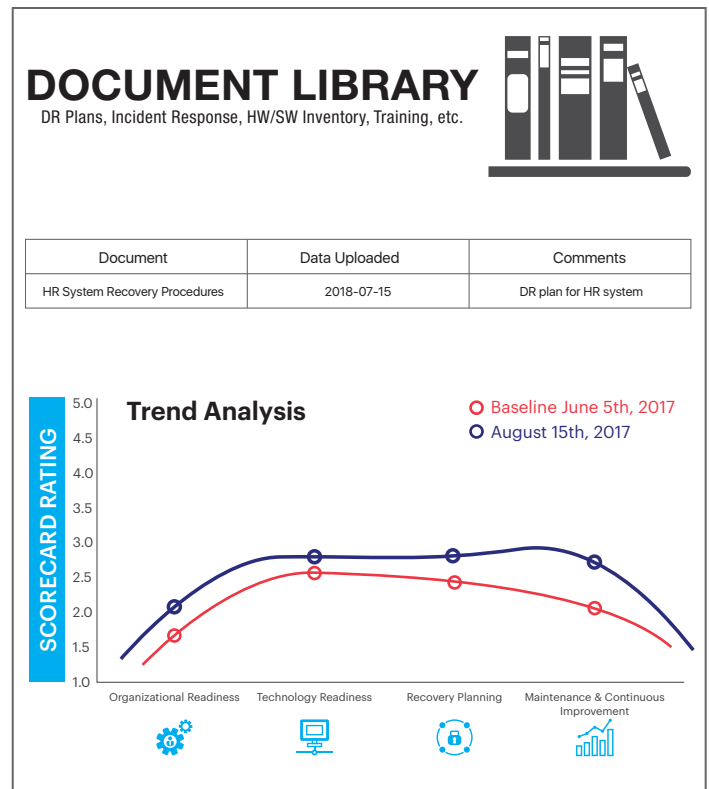
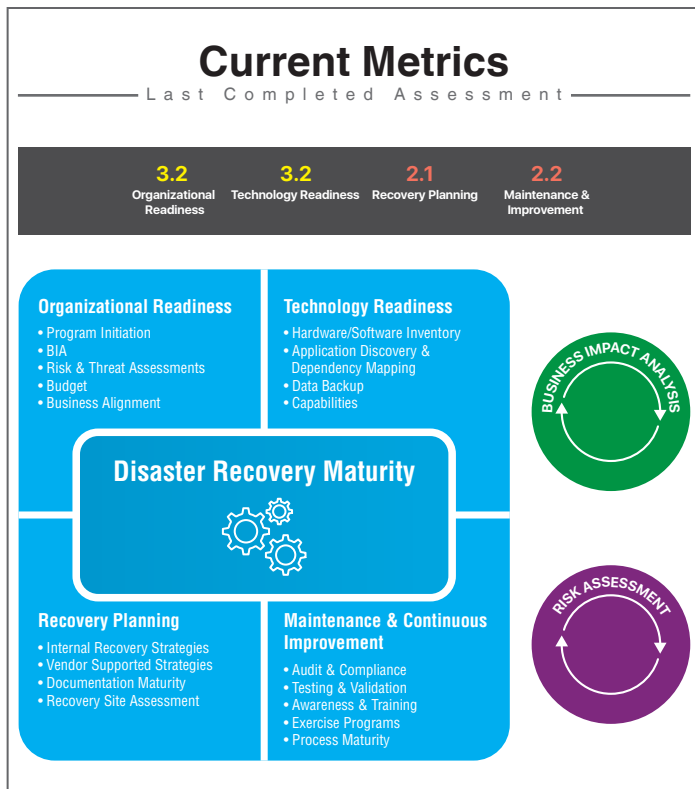
encasedIT

The Only Thing Harder Than Planning for an Emergency is Explaining to Customers Why You Didn't!

IT Service Continuity is a subset of Business Continuity Planning (BCP) and encompasses IT disaster recovery planning and wider IT resilience planning. It also incorporates those elements of IT infrastructure and services which relate to communications such as (voice) telephony and data communications. The IT Service Continuity strategy is the "technical component" that's aligned to the Business Continuity Lifecycle and helps you to prepare for the worst-case scenario; that is not just how to recover from a disaster but to stop the disaster from occurring in the first place, if at all possible.

Using disciplines such as IT Service Continuity Management (ITSCM), these activities investigate, develop and implement recovery options when an interruption to service reaches a pre-defined point. It must be a part of the overall Business Continuity Plan and not dealt with in isolation.

With encasedIT users login to a customized dashboard that provides instant access to ITSC tools to support BIA's, Risk Assessments, DR Maturity Assessments, and an auto-generated Risk Registry that links directly to the Risk Assessment module. When you combine the power of the IT Infrastructure Health Check and Cloud Readiness modules, your organization can leverage the industry's first holistic approach to IT infrastructure management.



The encasedIT Service Continuity Management dashboard embraces an at-your-fingertips approach, designed to provide a three-click maximum in accessing all portal information - including other modules.



Find out more.

Learn more about how encasedIT can help your organization build an IT strategic roadmap by downloading our white paper, "A Holistic View of IT Strategic Planning" email: encasedIT@wgadvisory.ca